

BOSTON AND MAINE RAILROAD

MECHANICAL DEPARTMENT
BOSTON

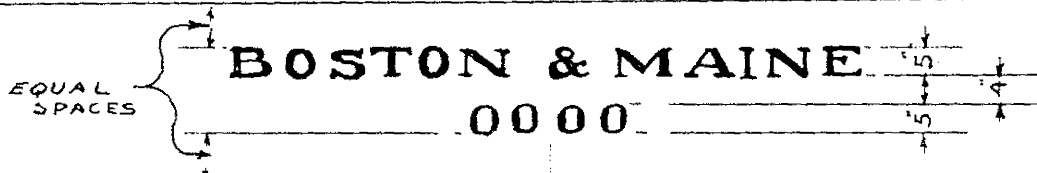
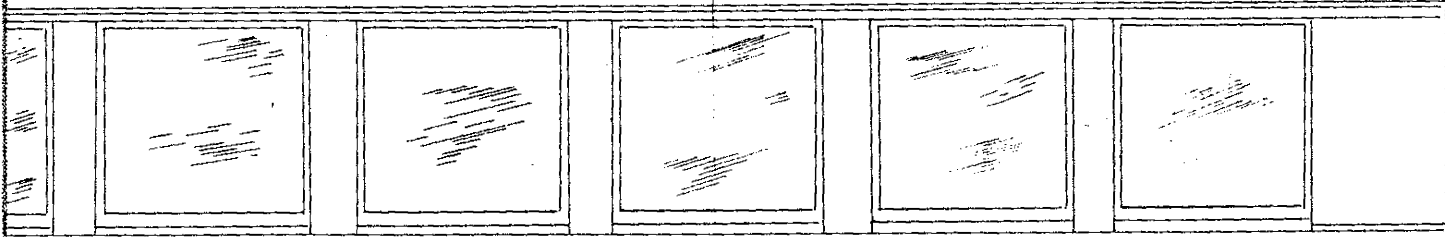
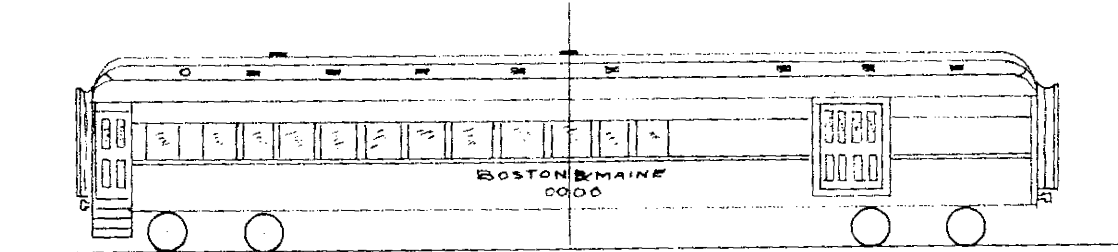
SP-553-10 ABC

APPROVED <i>D. A. [Signature]</i>	ISSUE 11-17-41: A
ASSY. MECH. ENGR. <i>[Signature]</i>	12-17-41: B
	8-19-49: C

LETTERING - COMBINES

SUPERSEDING

CARS	LINE	DATE
BOSTON & MAINE RR AND MAINE CENTRAL RR	1	11/6/41



4" OF CAR

MAINE CENTRAL
000

LETTERING TO BE AS SHOWN ABOVE, IN GOLD LEAF. #2154-7
 CAR BODY, TO BE PAINTED ^{MAFROON} TUSCAN RED (TWO COATS) FLOOD & CONKLIN #2159-
 STEPS, INCLUDING SIDES (INSIDE & OUTSIDE), RISERS & TREADS
 ARE TO BE PAINTED BLACK.
 SIDE & END HANDHOLDS ARE TO BE PAINTED BLACK.
 GRAB IRONS IN VESTIBULE ON END POST, AND SLOPING GRAB IRON
 OVER STEPS ARE TO BE PAINTED ORANGE.

DR. *lae.*
TR.
CM.

© COLOR & NO CHANGED
 (B) PAINT INFORMATION ADDED

LETTERING COMBINES SP-553-10